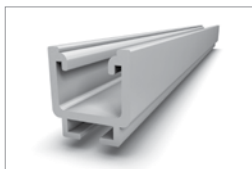
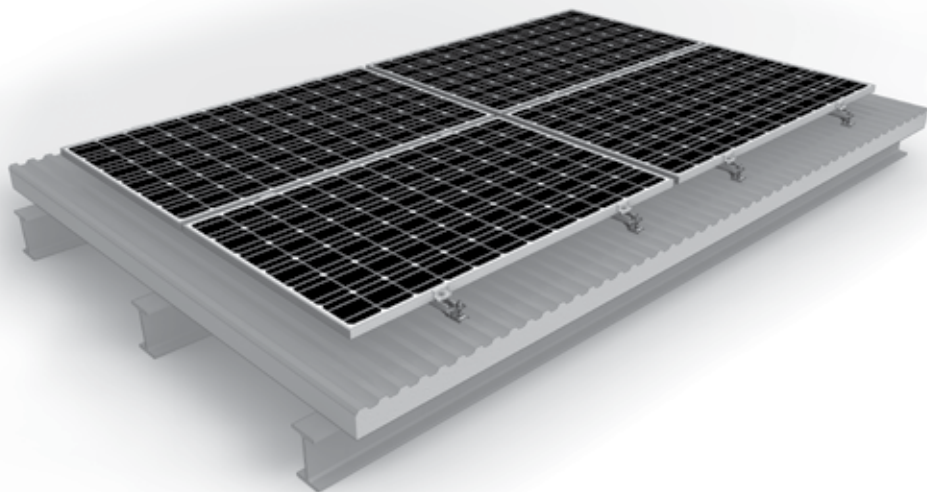


Mounting systems for solar technology



K2 SYSTEMS  
**SLOPED ROOF SYSTEMS**  
**SOLAR FASTENER**

## SOLAR FASTENER SYSTEM

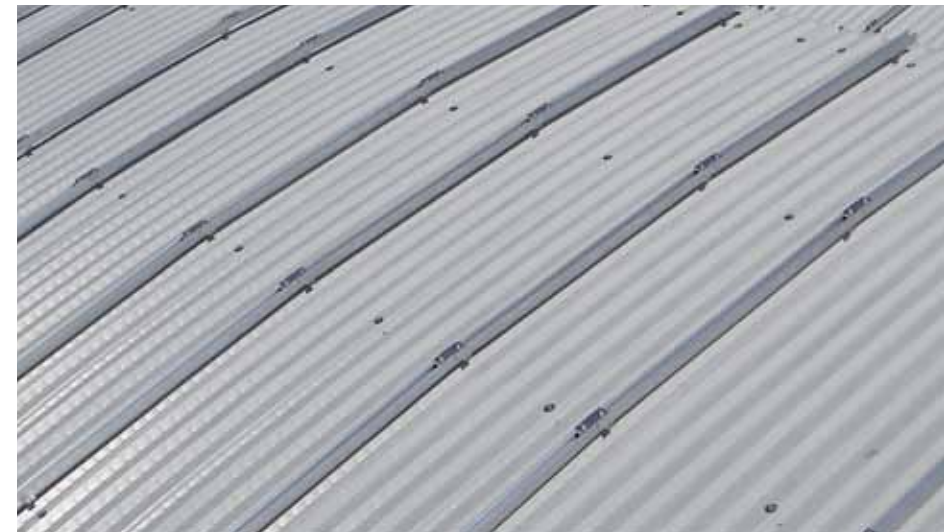
- ↪ For roofs with steel or aluminium profile or fibre cement roofing
- ↪ Screw head with hexagon drive allows for assembly with electric screwdriver
- ↪ Extra-long metric thread for height adjustment
- ↪ Assembly using K2 adapter plate
- ↪ Elongated hole enables easy connection by T-bolt to the K2 Solid Rail or K2 CrossRail range
- ↪ All components made of high-quality stainless steel and aluminium, sealing element made of high quality EPDM
- ↪ Greater span widths possible by mounting with K2 Bridge
- ↪ Includes technical approval
- ↪ Modular structure suitable for any system size

### Technical data

Field of application	Sloped roof
Roofing	Roofs with steel or aluminium profile or fibre cement covering with steel sub-structure
PV modules	Suitable for all standard module types
Module orientation	Vertical / horizontal (with cross bracing)
Material	Aluminium (EN AW 6063 T66), stainless steel
Connecting elements	Stainless steel A2-70, sealing made from EPDM
Roof connection	Screw connection
Static principles	Technical approval Z-14.4-532, Determination of load capacity values by independent test institutes, Load assumption in accordance with DIN 1055 / Eurocode 1
System components	Solar fasteners, K2 SolidRail or K2 CrossRail range, mid and end clamp sets, K2 Bridge, K2 Climber, T-head bolts, M K2



Novatech | Michelfeld-Erlin - Germany  
System: 1,4 MW | Solar fastener System



Elpo | Brixen - Italy  
System: 88,83 kW | Solar fastener System

SERVICE-HOTLINE  
**+49 (0)7152 3560-0**  
[www.k2-systems.com](http://www.k2-systems.com)

Product Sheet Solar Fastener | GB1 | 0312 | Subject to change  
Product illustrations are exemplary illustrations and may differ from the original.

